

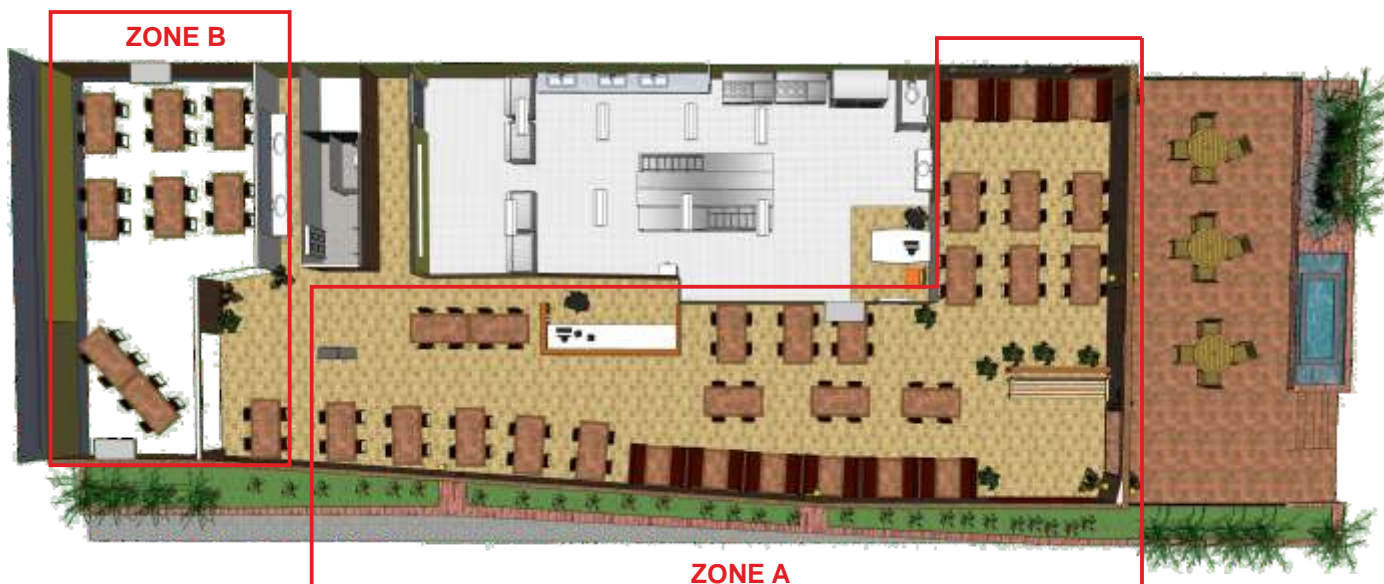
Volume and audio source selection in 2 zones using Digiline 8



The installation consists of a restaurant with 2 independent zones. It has two sound sources: Multimedia player and audio from a TV system. The intention is to control each zone individually equalizing each one according to factors such as number of customers, type of music or event type.

Therefore it needs to create a number of preset to load different configurations quickly and choose the audio source in each zone, controlling volume.

We use **Digiline 8** due to its dual function: processor and amplifier and **WGC 1** as wallmount controller from where configurations created will be triggered.



Volume and audio source selection in 2 zones using Digiline 8

Installed Devices



Multiplayer 10 WEB (x1)
Radio Streaming y media player / USB



Digiline 8 (x1)
4 inputs, 16 outputs audio distributor



WGC 1
Wallmount controller with 7 configurable pushbuttons



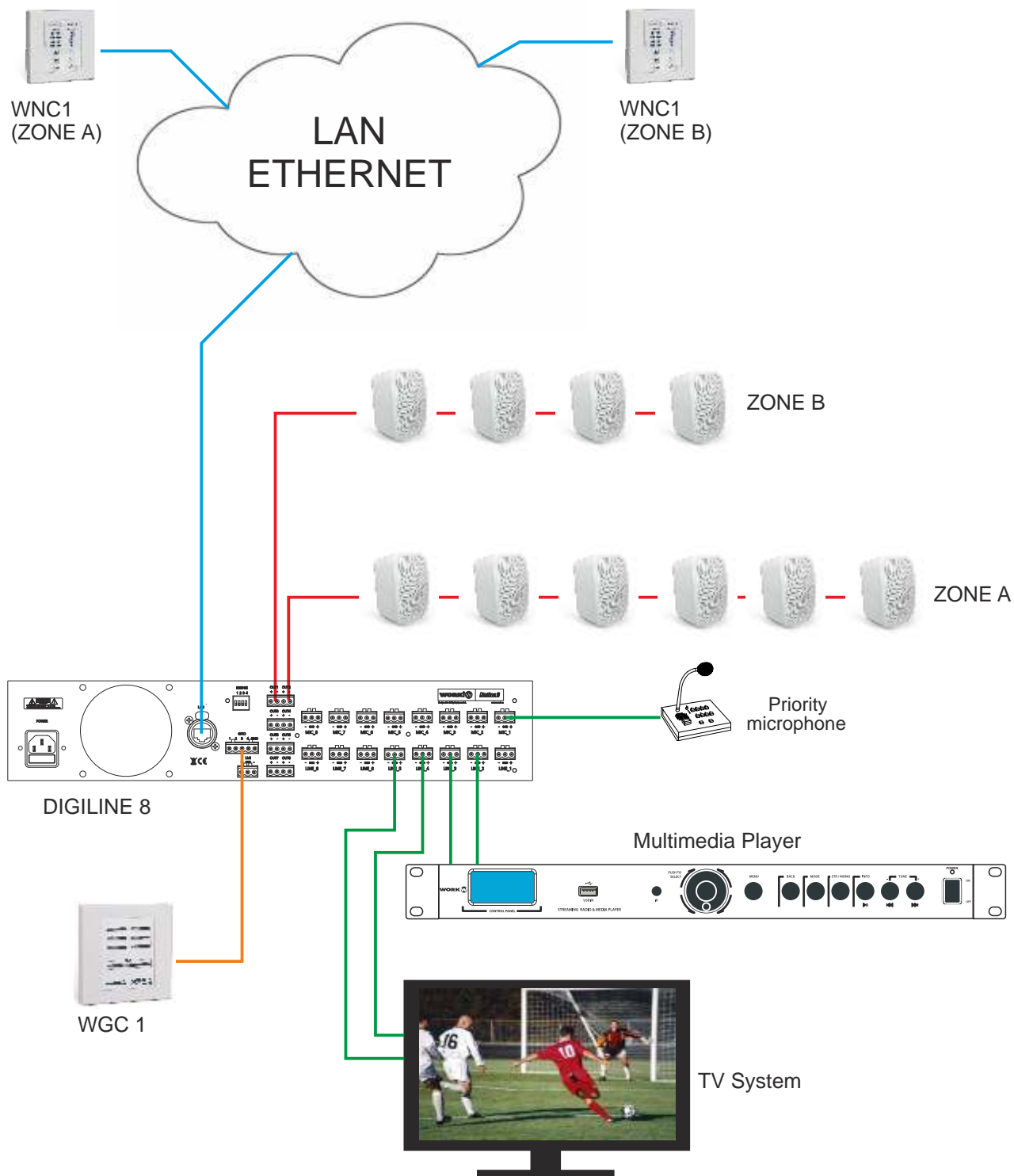
WNC 1
Wallmount controller (Input selection and Gain)



NEO Series
Wallmount loudspeakers

Volume and audio source selection in 2 zones using Digiline 8

Connection



Volume and audio source selection in 2 zones using Digiline 8

WorkCAD configuration

Using the WorkCAD designer software, it is possible to configure the device, creating one or two presets with output levels, input assignments, equalizer and xovers filters, etc.



In the previous image, we have setup both zones with their own output level, input assignment and filter. The final result is showed in the curve response graphic. The setup can be stored as preset (PRESET 1 in that case, and renamed as DEFAULT A). We can create another preset with diferent configuration according to our necessities.



Input assignation in Output 2 (named as ZONE B)



Equalizer filters applied in Output 2 (Named as ZONE B)



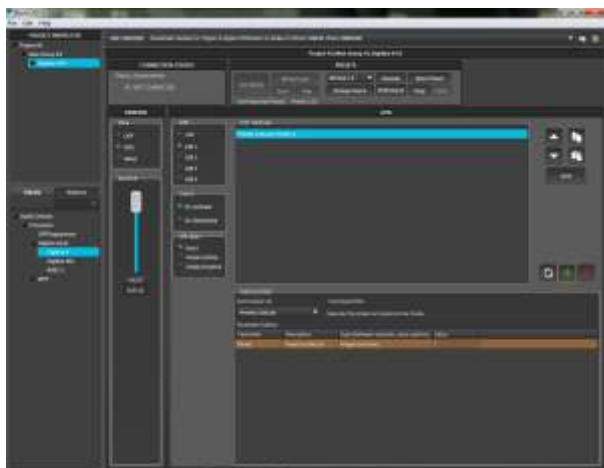
Xover filters applied in Output 1 (Named as ZONE A)

Volume and audio source selection in 2 zones using Digiline 8

Saving GPI's

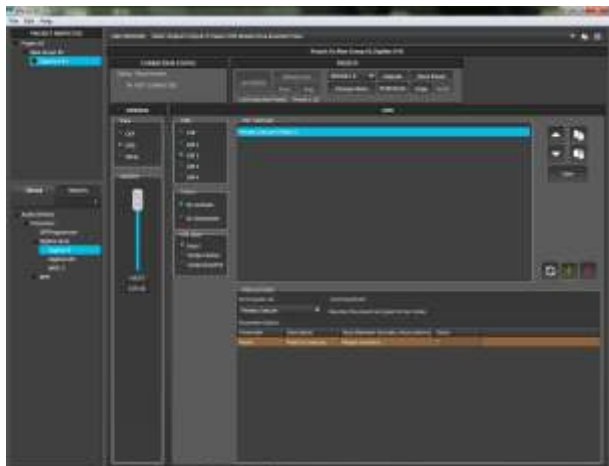
We use 3 GPI with this configuration:

- **GPI number 1:** When we push it, the software will load PRESET 1
- **GPI number 2:** When we push it, the software will load PRESET 2
- **GPI number 3:** When we push it, the software will mute sound inputs and will act Priority microphone input in order to make announcements or warnings.



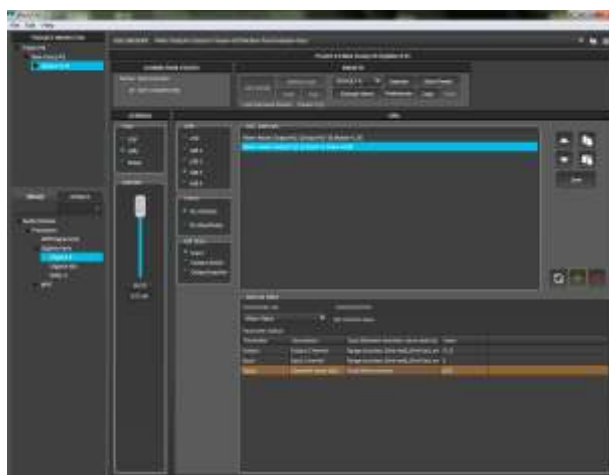
GPI 1

- In **Method Editor** window select **Preset Execute** command in the **Commands List** menu.
- Type "1" (as PRESET 1) in **Value**. and press "+" to copy the sentence in **OSC method** window.
- Press **Save** to store it



GPI 2

- In **Method Editor** window select **Preset Execute** command in the **Commands List** menu.
- Type "2" (as PRESET 1) in **Value**. and press "+" to copy the sentence in **OSC method** window.
- Press **Save** to store it

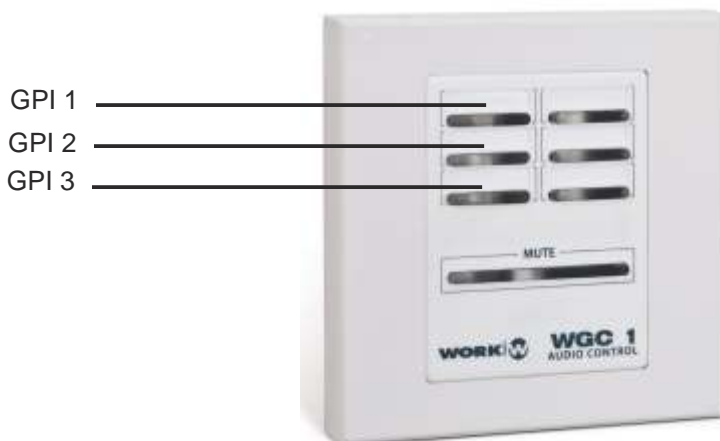


GPI 3

- In **Method Editor** window select **Mixer Mute** command in the **Commands List** menu.
- Type "[1,2]" in **Output Channel**.
- Type "[2,5]" in **Input Channel**.
- Type "1" in **Muted** to mute all sound inputs in both outputs.
- In **Method Editor** window select **Mixer Value** command in the **Commands List** menu.
- Type "[1,2]" in **Output Channel**.
- Type "[1]" in **Input Channel**.
- Type "8" in **Value** to setup the level to 8 dB
- Press "+" to copy the sentence in **OSC method** window.
- Press **Save** to store it

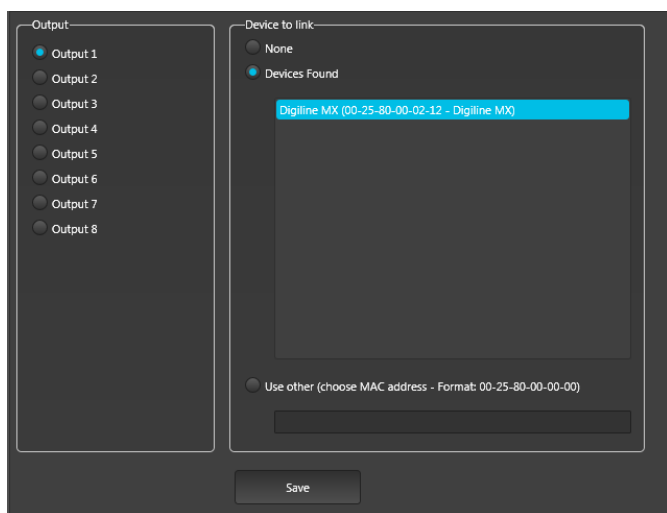
Volume and audio source selection in 2 zones using Digiline 8

Once all GPI's stored, just press over the corresponding button in WGC 1 to execute the correct configuration

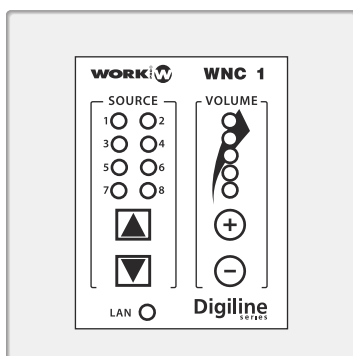


WNC 1

This wallmount controller allows to be assigned to one output and setup its output gain and the input source. The configuration is quite simple.



- Using the WorkCAD designer software, select the **WNC 1** connected in the same LAN.
- Select the Digiline device
- Select the Output where the controller will be associated.
- Press Save.



Repeat the process with the other controller, assigning it to Output 2. Now, you can control de audio source and the output gain individually.